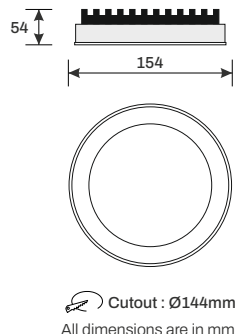
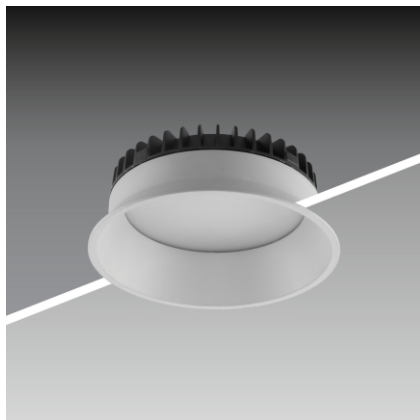


VERVE S Round

Product & Installation Details



Product Details

System Wattage
18W

Lumen Output
1650lm

Efficacy
90lm/W

CCT [K]
3000 | 4000 | 6000

Beam Angle
120°

Driver
450mA

General Specification

Product Preference

Environment
Indoor

Installation
Ceiling Recessed

Construction & Materials

Housing
Die Cast Aluminium

Body Color
White / Black Heat Sink

Thermal Management

Heat Sink Material
Die Cast Aluminium

Cooling Technique
Passive Cooling

LED Technology

LED Life Time @L70/B10
>50000 Hrs.

Colour Rendering (CRI)
CRI80 as Standard

General Features

Operating Temperature
0°C-50°C

Ingress Protection (IP)
IP20

Electrical System

Driven With
Constant Current Driver

Input Voltage
220V-240V/50-60Hz

Driver
Non-Integrated

Controls

Standard
On / Off

Optional
Mains / Analog / Dali
Bluetooth / Phase Cut

Optical System

Beam Direction
Fixed

Tilt
No

Swivel
No

Product Details:

Product Name	CCT	Beam Angle	Finish	Dimming Option
VERVE S RD - 18W	CW	120°	White	BLE/ DALI/ ANALOG
	NW	120°	White	BLE/ DALI/ ANALOG
	WW	120°	White	BLE/ DALI/ ANALOG



*Parameters may differ due to CCT or Driver current variation.